

Member Network

Grow your professional network and share ideas through local educational and social events for planners at all stages of their careers.

Professional Development

Advance your skills through education and training opportunities such as local brownbag lunches, a statewide conference, partnerships with allied professions, and strengthening the professional certification program.

Career Development

Enjoy benefits of employment services through listings for jobs, firms, RFPs, resumes, internships and mentoring, and leadership opportunities within APA.

Advance the Planning Profession

Advocate for good planning, offering and publicizing awards that recognize good planning, support ethics in planning, cultivate diversity in the profession, and encourage and recruit future planners.

Support Community Planning

Support smaller communities, planning commissioners and elected officials and citizen planners through education, pro-bono planning assistance teams, planners' forums, and local training opportunities.

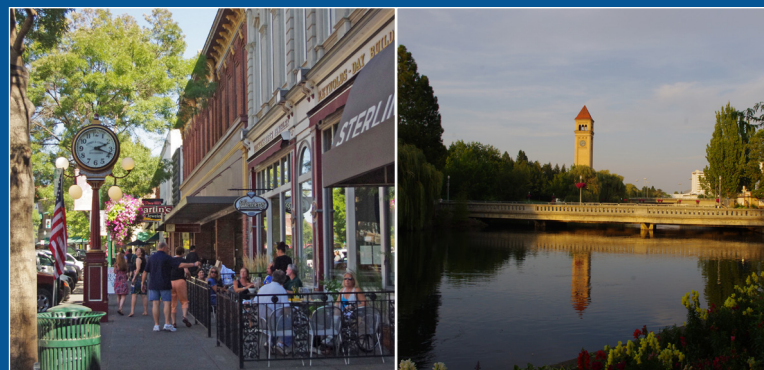
Make Great Communities

Encourage implementation of sustainability strategies, facilitate meaningful dialogue on planning issues with community leaders, influence legislation and public policy around growth management and other planning issues, and inspire planners and decision-makers.

The Washington State Chapter of the American Planning Association is an organization of people who make great communities happen through our engagement in public and private sector planning and decision making. We share our experience, knowledge and resources, stay current on planning issues and ideas, and contribute to great places.

The mission of our chapter is to build an effective constituency for planning our state's economic and human resources and its built and natural environment.

Our membership includes public and private sector professional planners, students, citizen planners, planning commissioners and government officials, and others interested in planning within the state of Washington.

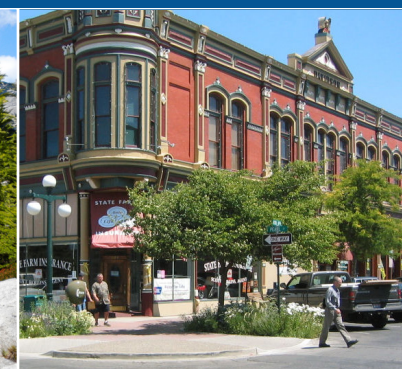


American Planning Association
Washington Chapter

Making Great Communities Happen

2150 N 107th St
Suite 205
Seattle, WA 98133
(206) 682-7436

office@washington-apa.org
www.washington-apa.org



American Planning Association
Washington Chapter

Making Great Communities Happen

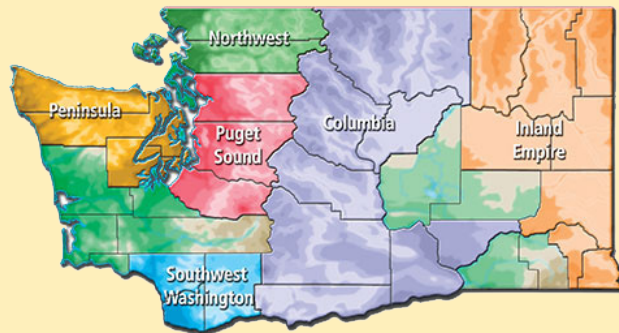


The Washington State Chapter of the American Planning Association is governed by a board of directors elected by the membership. The board includes representation from each of the geographic sections. The board meets quarterly to conduct chapter business and convenes its annual membership meeting during the Chapter's yearly conference. Dues support chapter functions and member benefits.

Professional planners help create communities of lasting value by addressing the impacts of today's actions on tomorrow's communities.

Members of the Washington State Chapter of APA work together through its legislative, professional and educational networks to champion good planning in all communities throughout the state.

Our work with **students** and **faculty**, **planning commissioners** and **elected officials**, and **citizen planners** ensure that good planning principles inform public decision-making and education.



Columbia Section

www.washington-apa.org/sections/columbia

Inland Empire Section

www.washington-apa.org/sections/inlandempire

Northwest Section

www.washington-apa.org/sections/northwest

Peninsula Section

www.washington-apa.org/sections/peninsula

Puget Sound Section

www.washington-apa.org/sections/pugetsound

Southwest Section

www.washington-apa.org/sections/southwest

APA Washington membership is open to everyone who is committed to applying the benefits of planning to create communities of lasting value. We welcome individuals in all other allied professions and citizens interested in planning. Allied professionals and engaged citizens who join APA enjoy the same benefits as members who are professional planners.

Join the more than 1,300 members of the Washington State Chapter of APA to connect with other professional planners, enhance your career, and have a greater impact on planning in communities throughout your state while tapping in to the deep nationwide pool of resources offered by national APA.

TO JOIN, GO TO:

www.washington-apa.org/about/membership - or - www.planning.org/join. Membership options include:

REGULAR MEMBERSHIP: This includes membership in the national American Planning Association as well as Chapter membership. Apply through national APA at: www.planning.org/join/planners.

CHAPTER-ONLY MEMBERSHIP: You can become a Chapter-only member at a relatively lower cost and enjoy all the benefits the Chapter offers. Apply through downloadable forms available from national APA: www.planning.org/join/planners. Write "CHAPTER-ONLY" on your regular membership application form.

PLANNING BOARD MEMBERSHIP: Planning Commissioners and appointed and elected officials are invited to join APA at a reduced rate and receive enhanced services designed to support you in your planning role. Apply through national APA at: www.planning.org/join/commissioners.

STUDENT MEMBERSHIP: Students enjoy a free first year of membership with national APA and the Chapter and a reduced rate after that for four years. Learn more at: www.planning.org/join/students.

ACADEMIC MEMBERSHIP: University planners and faculty can participate. Fully accredited departments are eligible for group membership programs that are specially designed for planning educators. Learn more at: www.planning.org/join/academics.

SECTIONS: The APA Washington Chapter has six active local sections (Columbia, Inland Empire, Northwest, Peninsula, Puget Sound, and Southwest), which provide member services for various geographic areas of the state.

CONFERENCES AND WORKSHOPS: The APA Washington Chapter offers conference and workshop events on the local and regional levels that highlight critical planning issues and allow you to sharpen your skills and increase your expertise.

LEGISLATIVE ACTIVITIES: The Chapter has a strong presence in the State legislative process in advocating for planning and the public interest. During each session of the Washington State Legislature, the Legislative Committee coordinates with other stakeholder groups, tracks legislative initiatives, reviews proposed changes to State law, and helps educate legislators and stakeholders on good planning processes by providing comment. By joining the Chapter, you have a voice in Olympia.

AMERICAN INSTITUTE OF CERTIFIED PLANNERS: As a member of APA, you can earn AICP certification, the accepted credential for professional competence and ethical practice in planning.

PUBLICATIONS: National APA members receive Chapter and section newsletters, along with *Planning*, the award-winning monthly magazine that focuses on cutting-edge developments in the field. You will also receive a discount on the quarterly *Journal of the American Planning Association* and access to Planners Book Service, with nearly 900 books, video and audio tapes, and software titles related to planning.

JOB SERVICES: Find the right job or the right person for the job. Members can view local job listings on the Chapter website and can access Jobs Online, a national database of planning jobs and résumés.

Photo Credits -

Front Cover: Bob Bengford, City of Bremerton, Gary Mabley, Ivan Miller, Ferdouse Oneza.

Back Cover: Gary Mabley.